

Waste Management From Natural Disasters

Fire and Flood

John Anderson, Director, PWA

Charlie Hartline, Project Manager, PWA



Public Works
Advisory

Public Works Advisory

- Part of the Department of Regional NSW with 16 offices spread across regional NSW.
- PWA supports our Local and State Government clients to deliver critical infrastructure initiatives.
- PWA has specialist teams with expertise in civil infrastructure, including: water and wastewater, roads and bridges, rivers and stormwater and building projects.
- Engineering Emergency Management –
Engineering Services Functional Area Co-Ordinator



The scale of recent disasters required a new paradigm for the clean-up response



New Level of Coordination



Councils

Private Sector

State & Federal Governments

State Government Agencies



Australian Government



Resilience NSW



Public Works Advisory



PORT MACQUARIE HASTINGS



2019 – 20 Bushfire Waste Management



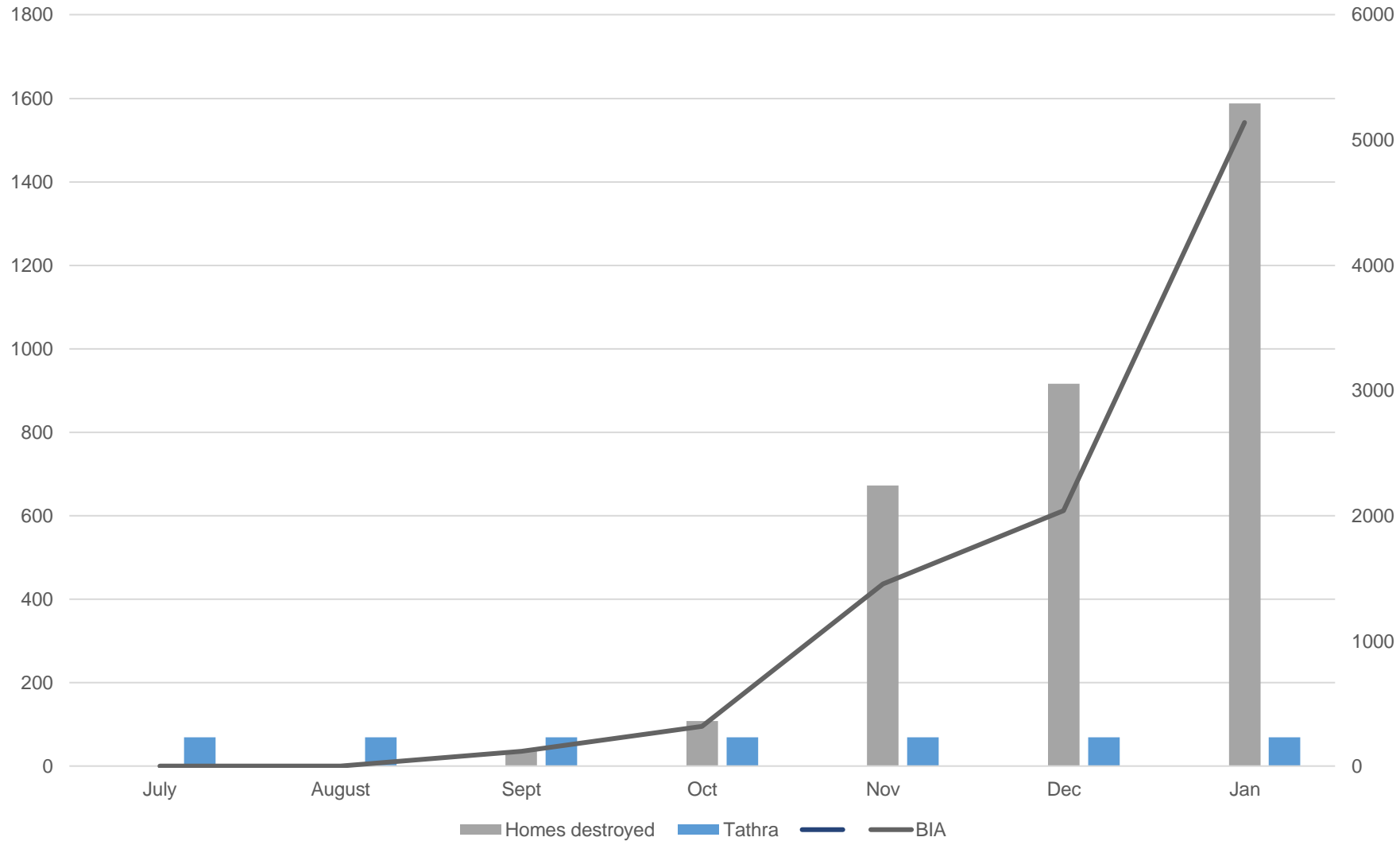
Public Works
Advisory

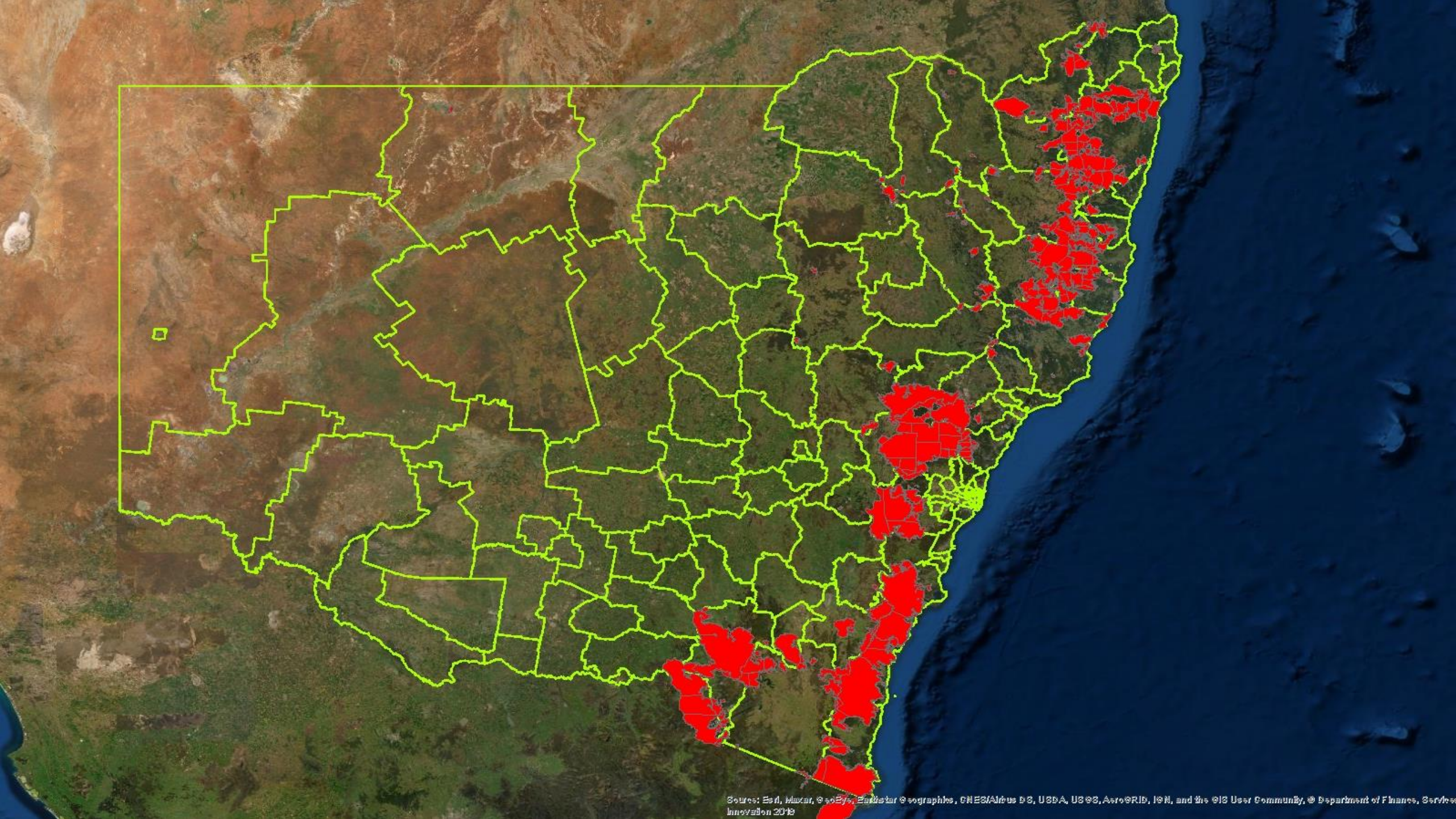
Previous bushfire clean-ups

- **Coonabarabran (2013)**
52 homes destroyed
- **Blue Mountains (2013)**
203 homes destroyed
- **Tathra (2018)**
66 homes destroyed



Context for the 2019 – 20 Response





Early Challenges



Evolution of the Response



Bushfire Waste Strategy – the inputs



Bushfire Waste Strategy – the execution



Bushfire Waste Management

By the numbers

- >3650 eligible “Opt-In” registrations (Service NSW).
- 3601 Property Clearances (as at Friday 6 November 2020).
- 93 subcontractors engaged,
- 23 Indigenous owned, with Indigenous Australians making up more than 10% of total clean-up workforce.
- 99% local or regional businesses
- 95.4% of contracts were awarded to small or medium sized businesses
- In total, more than 1,000 jobs created
- At peak, this included 120 crews working across 30 Local Government Areas, 713 site operatives, 300 truck drivers.
- More than 340,000 tonnes of waste to licensed landfills.
- Training achievement: 6.7% of total hours worked. 44,495 hours
- Aboriginal Participation - achieved 12% of total spend.
- More than 29,000 emails and 4,000 calls through the call centre were handled efficiently to ensure no one dealing with trauma was left unanswered.

March 2021 Floods Waste Management



Public Works
Advisory

Context for the Response



Bellbrook

Eungai Creek

Kempsey, 13 March 2021

Kinchela

Frederickton

Gladstone

Hat Head

Kempsey

Burnt Bridge

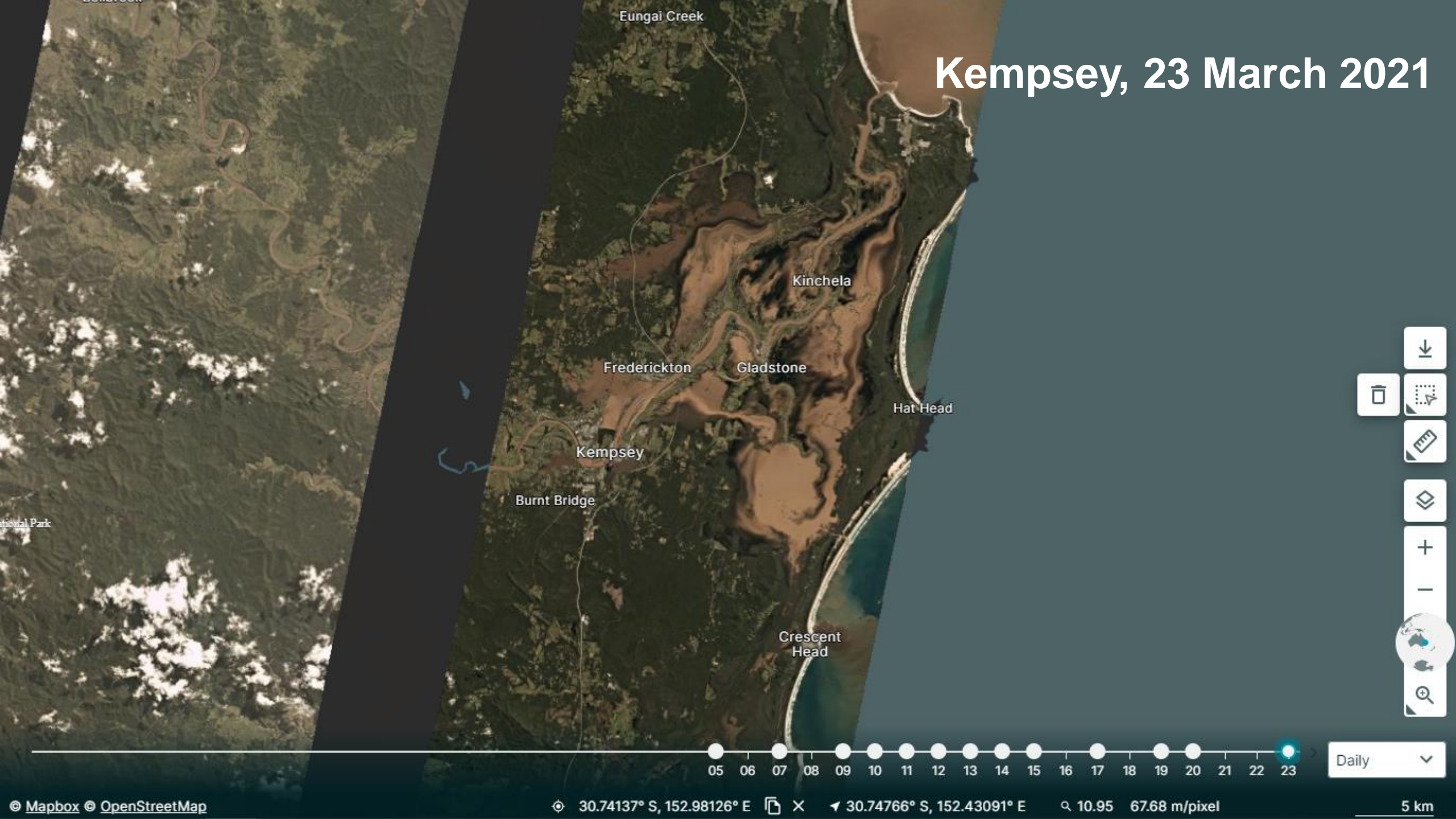
Crescent Head

A vertical toolbar containing various map navigation and utility icons: a download arrow, a trash bin, a location pin, a street view person, a compass, a plus sign for zoom in, a minus sign for zoom out, a globe, a refresh arrow, and a magnifying glass for search.

A horizontal timeline of circular markers representing dates from 25 to 31. The 13th marker is highlighted in teal, indicating the current date of the satellite image.

Daily

Kempsey, 23 March 2021

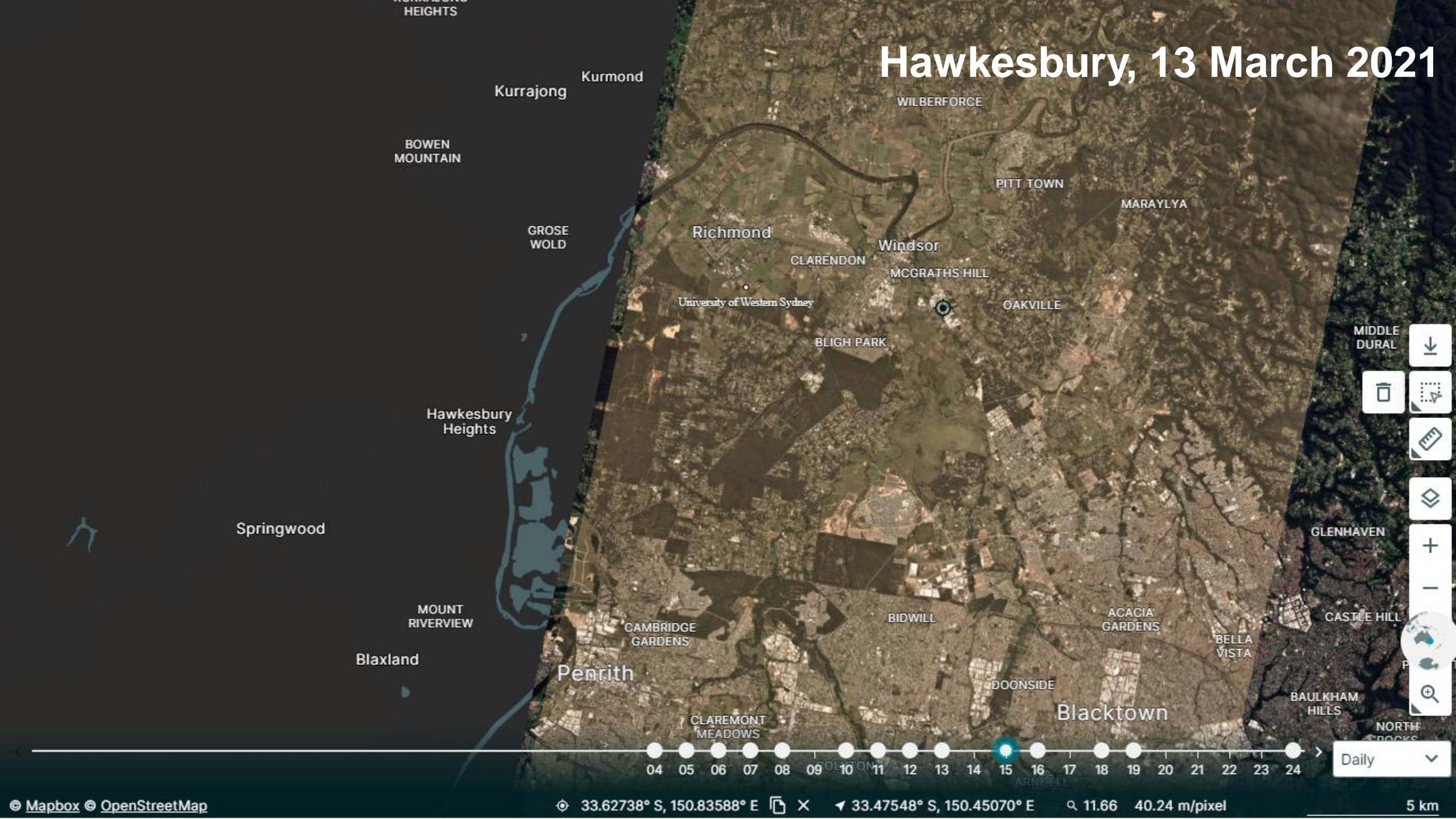


Map navigation controls including a download icon, a trash icon, a measurement tool, a compass, zoom in (+) and zoom out (-) buttons, a globe icon, and a search icon.

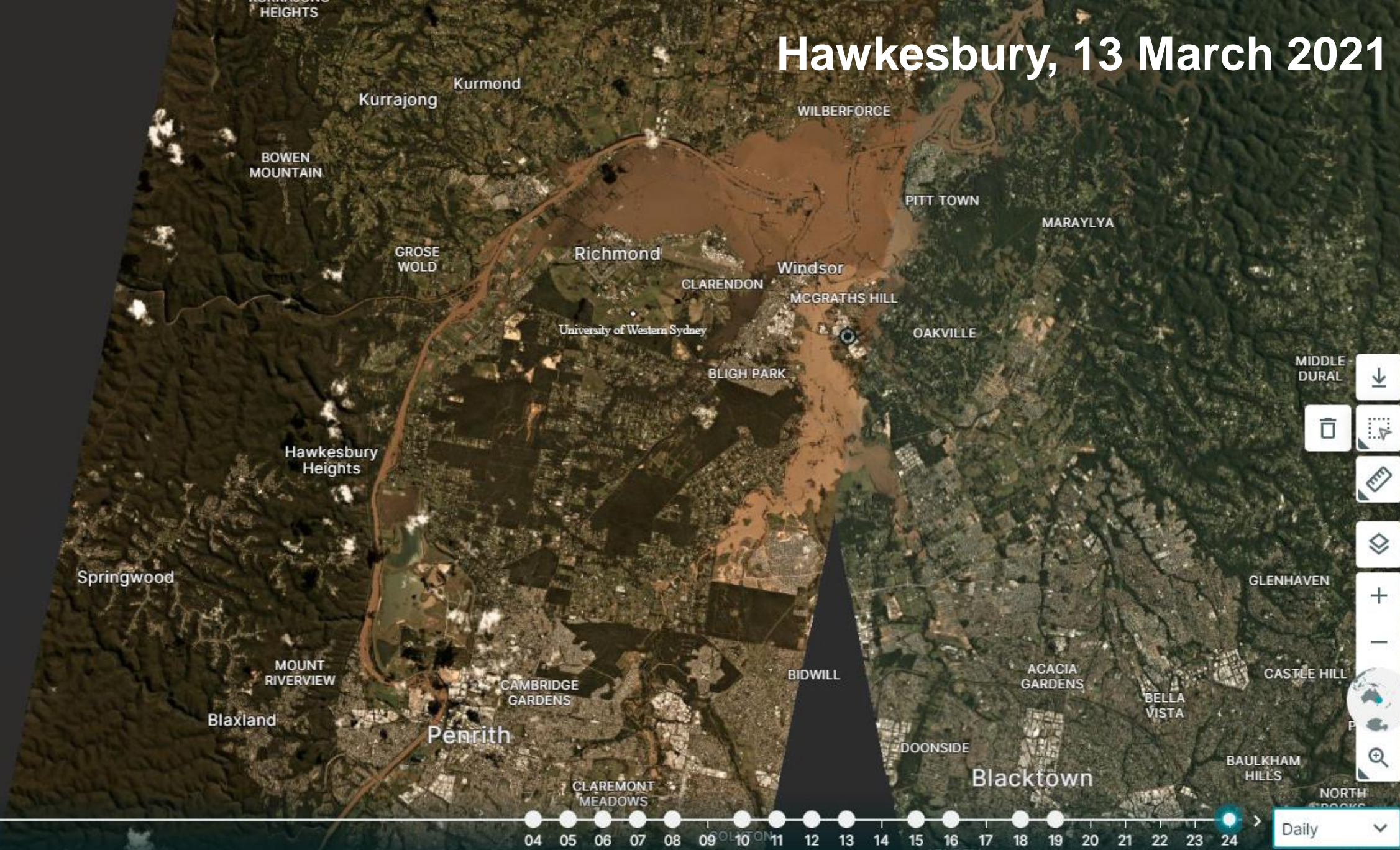


Daily

Hawkesbury, 13 March 2021



Hawkesbury, 13 March 2021



Who Will Respond?



Early Challenges



Flood Waste Strategy Mid-North Coast



Flood Waste Strategy - The Hawkesbury



Hawkesbury Riverside Gardens



Flood Waste Strategy - The Shoreline





What Next?



Questions



Waste Management From Natural Disasters Fire and Flood



Public Works
Advisory

www.publicworksadvisory.gov.au